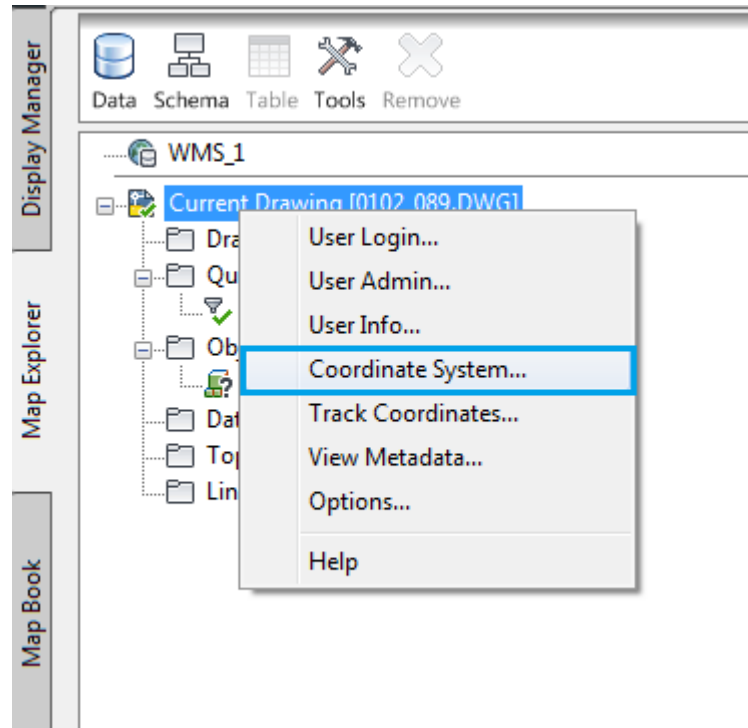


ADD IMAGE SERVER TO AUTOCAD

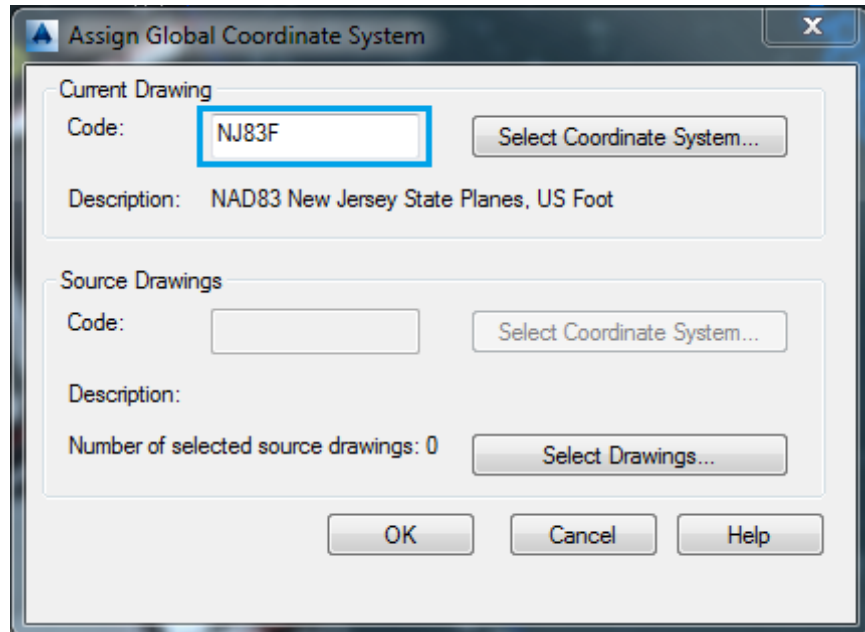
- **Setting the Coordinate System**

- In the “Task Pane”, go the “Map Explorer” tab → Right Click on drawing name and select “Coordinate System”
- If you are using Civil 3D, you can get to the Map Task Pane by typing in “MAPWSPACE” on the command line, and hitting “On”.
 - If you’re using AutoCAD Civil 3D version prior to 2015, you need to switch to the Planning and Analysis workspace.



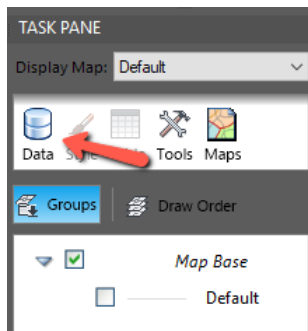
- Assign Global Coordinate System
 - Enter in “NJ83F” for the “Code” under “Current Drawing” and hit “Ok”

ADD IMAGE SERVER TO AUTOCAD



- **Connect**

- Click on “Data”, then select “Connect to Data...”



- **Connections**

- On the left side is the “Data Connections by Provider” section.
- Click on the last one that says “Add WMS Connection”
- On the right side (“Connection name” doesn’t matter)...
- For “Server name or URL”, enter: <https://img.nj.gov/imagerywms/Natural2015?>
 - 2017 Option (not as good):
<https://img.nj.gov/imagerywms/Natural2017?>
 - 2019 Link: <https://img.nj.gov/imagerywms/Natural2019>
 - 2020 Link: <https://img.nj.gov/imagerywms/Natural2020?>
- Click “Connect”

ADD IMAGE SERVER TO AUTOCAD

OSGeo FDO Provider for WMS


Connect to Data Source
Read access to OGC WMS-based data store.

Connection name:
WMS_1

Server name or URI:
http://geodata.state.nj.us/imagerywms/Natural2015?version=1.3.0

Version:
Default version

☐ Show proxy settings


 **Connect**

- When User Name and Password dialog box pops up, just hit “Login”. No name or password is needed.
- Click on the check box that says “Natural 2015” then click on “Add to Map”.

WMS
WMS_1 (http://geodata.state.nj.us/imagerywms/Natural2015?version=1.3.0)

Add Data to Map
Available sources in this connection. Select items to add to the map as layers.

Schema	Image Format	Server CS Code	Style	Background
WMS_Schema				
<input type="checkbox"/> Natural 2015				
<input checked="" type="checkbox"/> Natural 2015	png	EPSG:4326	<Default>	<input type="checkbox"/> Transpar




☐ Combine into one layer:

Combined Layer Info

Image Format	Server CS Code	Background

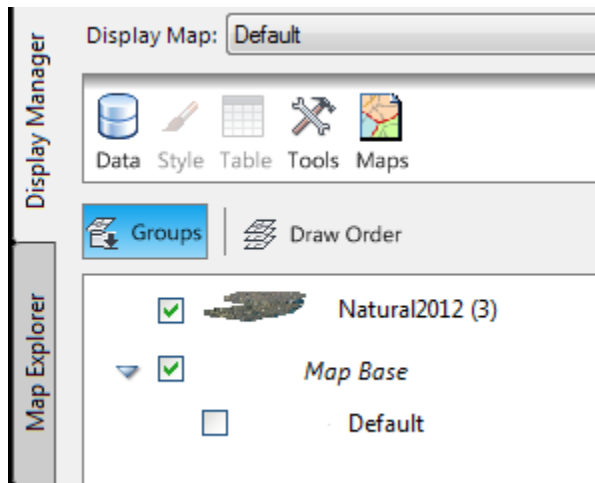
☐ Cache WMS data

 **Add to Map**

- Close Panel. (There’s a little “x” in the upper left hand corner).

ADD IMAGE SERVER TO AUTOCAD

- AutoCAD will zoom out to the extent of the ortho.
- Back in the Task Pane, in the “Display Manager” tab, you’ll see “Natural2015” on top of “Map Base.”



- Just drag “Map Base” above “Natural2015” and hit Zoom Previous. That should put your lineup over the aerial and refresh your screen. (This is still AutoCAD, so don’t be surprised if this step doesn’t work. You may have to select your line-work and use your draw order command to bring it to the front and then regen).

ADD IMAGE SERVER TO AUTOCAD

